

For installing the entrance matting it is important to follow the steps below

ABI Brushmat, ABI Aluflexmat and ABI Alucablemat

In a mat-well	<ol style="list-style-type: none"> 1. Make sure the floor of the mat-well is <u>flat</u>. 2. Make sure the floor of the mat-well is clean and dry. 3. The entrance mat will be delivered as a roll. Open this package with care, without damaging the product. 4. Unroll the entrance mat with care in the walking length of the mat. Fixation on the floor is not necessary.
On top of a floor	<ol style="list-style-type: none"> 1. Make sure the floor is <u>flat</u>. 2. Make sure the floor of the mat-well is clean and dry. 3. The entrance mat will be delivered as a roll. Open this package with care, without damaging the product. 4. Optional is a sloping profile. This is the side away from door. 5. Unroll the entrance mat with care in the walking length of the mat. Fixation on the floor is not necessary.
With sloping profiles around	<ol style="list-style-type: none"> 1. Make sure the floor is <u>flat</u>. 2. Make sure the floor of the mat-well is clean and dry. 3. Fix the sloping profiles to the floor. This will create a mat-well. 4. The entrance mat will be delivered as a roll. Open this package with care, without damaging the product. 5. Unroll the entrance mat with care in the walking length of the mat. Fixation on the floor is not necessary.

ABI Diplomat

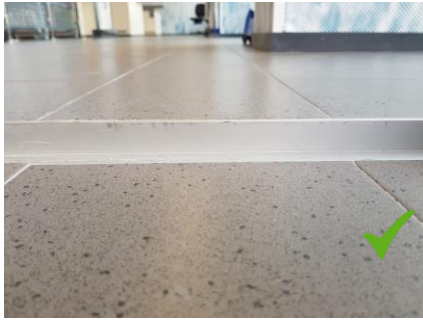
In a mat-well	<ol style="list-style-type: none"> 1. Make sure the floor of the mat-well is <u>flat</u>. 2. Make sure the floor of the mat-well is clean and dry. 3. The entrance mat will be delivered as flat parts. Open this package with care, without damaging the product. 4. Put the parts with care in the mat-well. For big entrances we will deliver a drawing of the entrance mat with the position of the several parts.
---------------	---

When an entrance mat contains more parts, this will be noted on the packages.

It is important to follow the order of the division.

If T-profiles are supplied, these are already made to measure.

Place the T-profiles between the mat parts, without fixation on the floor.



Step 1 & 2) Clean and flat surface



3 & 4) Place and unroll the entrance mat



Final result:



Bad conditions. Do not install the entrance mat.
This will damage the entrance mat.